

Making Money & Living Your Dreams

EXPLORING CAREERS: LOOK BEFORE YOU LEAP

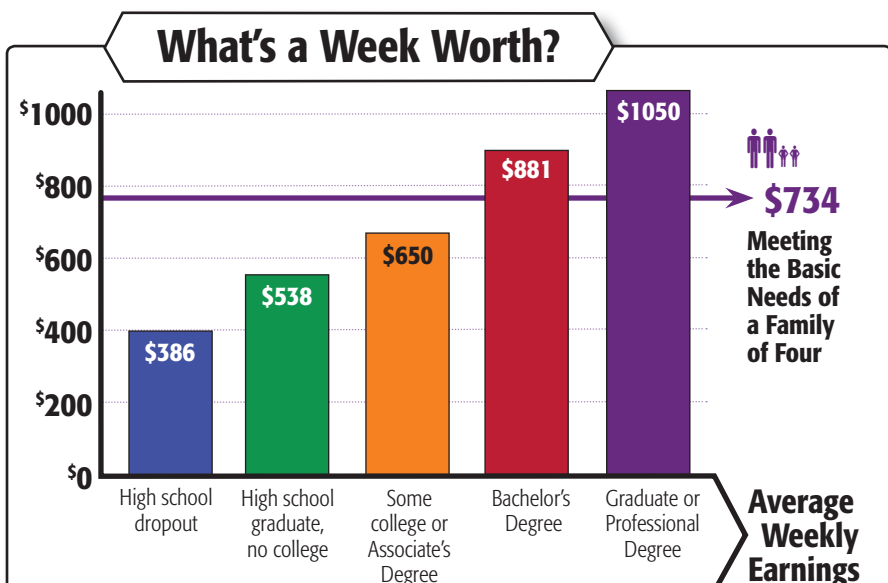
Whether you have known since the first grade that you want to be a doctor or you have no idea what work you might do after high school, taking a closer look at the careers in your community can be a great benefit.

How much do people with that career make a year? Are people hiring in this field now, and do they expect to be hiring in the future? How many openings are expected in the area? What are the best paying, most available jobs in the state and in your region?

The Missouri Economic Research and Information Center offers wonderful information about all manner of jobs in our state. You can find the answers to these and other questions at the Missouri Connections website, www.missouriconnections.org or the MERIC website, www.missourieconomy.org

At the same time, it is very important to consider the kind of life you would like to live. What do you expect to have, and what do you expect to do when you are an adult? There are many resources available on the Internet and through your local library to help you estimate expenses, plan a budget and figure out whether the job you expect to have matches the lifestyle you want. One such website is available through the Federal Reserve Bank of Dallas at <http://www.dallasfed.org/ca/wealth/index.cfm>

While you are exploring career options, remember to go beyond the virtual. Nothing compares with the first-hand information you can get by talking with someone in your Career Cluster of interest. Participate in job shadowing or an internship, complete a project at school that simulates work in your chosen field, or take a hands-on career education course related to your career interests.



PLANNING FOR THE FUTURE. You need to think about what you expect your life to be like in 10 to 15 years. Does your chosen career path and potential job prospects match those expectations? Many young people expect to get married and raise their own family. When you think about your future career, think about the life that you want to go along with it and whether your career plans will match your expected financial needs and desires. Dig into the data. What do you expect as a starting job when you finish your education, and where do you hope to wind up in your career?

The data for the needs of a family of four comes from MERIC's Self-Sufficiency data for Moniteau County, a median county for the state of Missouri in 2009. Weekly income data is based on annual income divided into 12 four-week months.

Sources: U.S. Census Bureau, American Community Survey (2009) and Missouri Department of Economic Development (2009)

my
Top
5

Occupation / Career

Salary Range

Job Availability and Outlook

_____	_____	_____
_____	_____	_____
_____	_____	_____
_____	_____	_____
_____	_____	_____

Review Your Personal Plan of Study

This form is intended to be used before you revise your Personal Plan of Study. It does not replace your local school's Personal Plan of Study documents.

Career Plan Confidence

- I know exactly what I want to do and how to get there.
- I'm sure my plan represents what I want to do.
- I think my plan is a good match for me.
- My plan is okay, but a lot of other things sound good, too.
- I don't know where to start.

Missouri Connections Website

User name: _____

Password: _____

Career Clusters or Career Path of Interest

Contact your school counselor for a Career Clusters Interest Survey or the Career Path Interest Survey if you have not already completed one. Career interest surveys are also available at www.missouriconnections.org

This Year, I Learned the Most About Myself When I ...

My Dream Job!

What would be your personal dream job? What kind of preparation (college, community college, apprenticeship, professional organization, certification, workshop, etc.) would you need to land the job? If you were to look in your community for a similar job, what company could you contact for information or to job shadow?

The job: _____

Preparation: _____

Job outlook: _____

Average salary: _____

Job shadow sites: _____

My Personal Plan of Study is helping me get to my dream job: Yes No

Changes I need to Make in My Personal Plan of Study:

Interest Survey Results

Write down a brief summary of the results of interest surveys from Missouri Connections, EXPLORE, PLAN, ASVAB, or other assessments.

These sound right to me.

Getting Ready ...

- Portfolio of career-related school work
- List of references with contact information
- Entrance exams _____
- Job shadowing experiences
- Internships or work related to your career of interest
- Student organizations and clubs related to your career interest
- Letters of recommendation
- Transcript and record of GPA and attendance
- Certifications (career readiness, etc.)
- Resumé

Minimum High School Graduation Requirements

- 4 units Communication Arts
- 3 units Social Studies
- 3 units Mathematics
- 3 units Science
- 1 unit ea. Fine Arts Practical Arts Physical Education
- 1/2 unit Health Education
- 1/2 unit Personal Finance

College or Training Program of Interest

Identify at least one college or training program that connects with your personal career interests and goals. Indicate where the college or program is located and list the entrance requirements for this college or program.

How's Your Plan?

REVIEW YOUR PERSONAL PLAN OF STUDY

Life After High School

Education after high school is a must-do, and there are a lot of options for you: on-the-job training, apprenticeships, community colleges, the military, and four-year colleges and universities.

Making Money

Learn where to look to make the money you want. Learn to find the career that matches all your desires.

Plan It, Do It

We have the questions, you have the answers.

Career Clusters

A tool to help you explore your interests, target career areas, and plan your future.



Start with the End in Mind



WHAT ARE YOUR OPTIONS AFTER HIGH SCHOOL?

Life, it's all about you: Your personality, your needs, your abilities, your relationships and your interests. So how do you land the dream job that matches you?

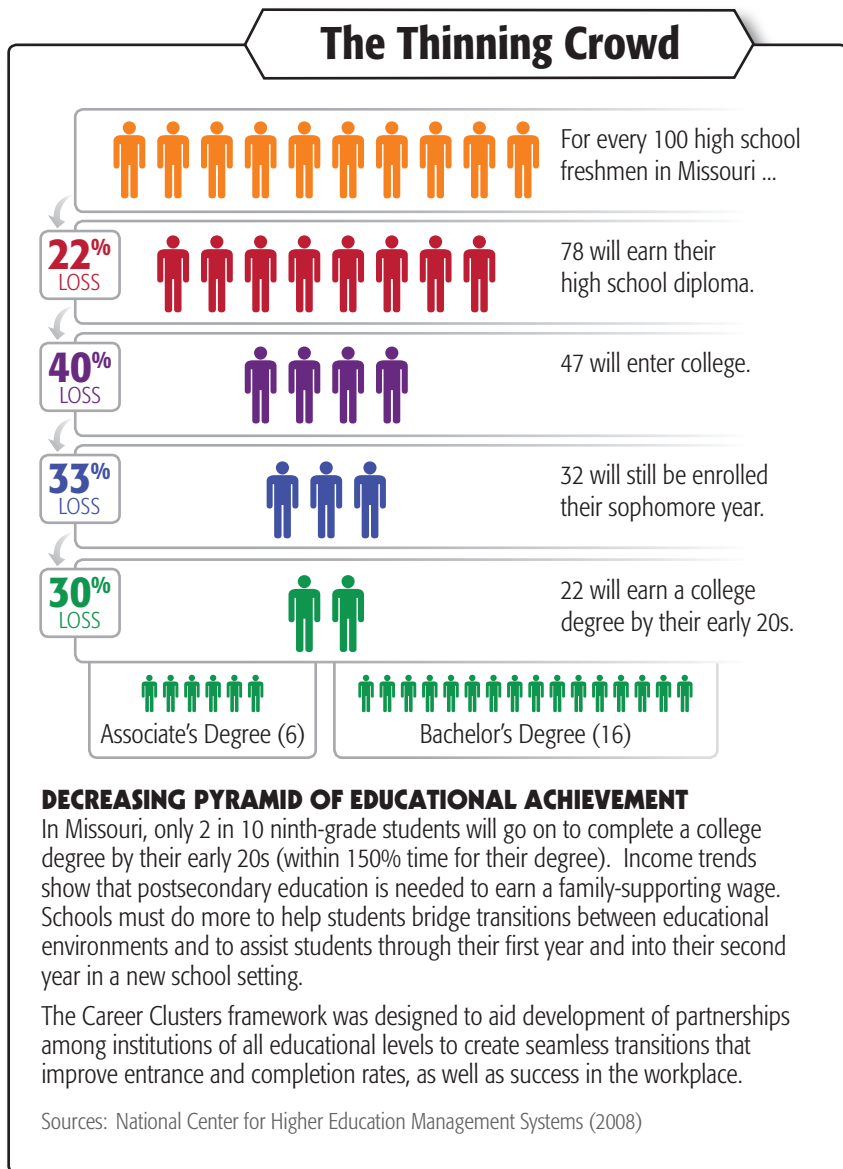
Before you can connect the dots, you have to know what the dots are. The first one is you. Take the time for an interest survey. What do you like? What are you good at? Write down your feelings about different jobs. You might be surprised what you learn about yourself.

The next dot is education and training. The fact is, the number of jobs that require only a high school diploma and pay a family-supporting wage shrinks every year. An increasing number of jobs require a four-year degree, but there are also good opportunities in most of the Career Clusters for those who learn technical skills through community colleges and apprenticeships. Area career centers across Missouri offer many programs to establish an outstanding foundation in your Career Cluster of interest, regardless of your educational plans after high school. Regardless of how much education and training you want after high school, many entry-level jobs require about the same skill levels in English, math and science as four-year colleges.

Within any Career Cluster, there are several options after high school, including a four-year college, community college, apprenticeships, the military and on-the-job training. Follow this model for your career: explore, plan, prepare.

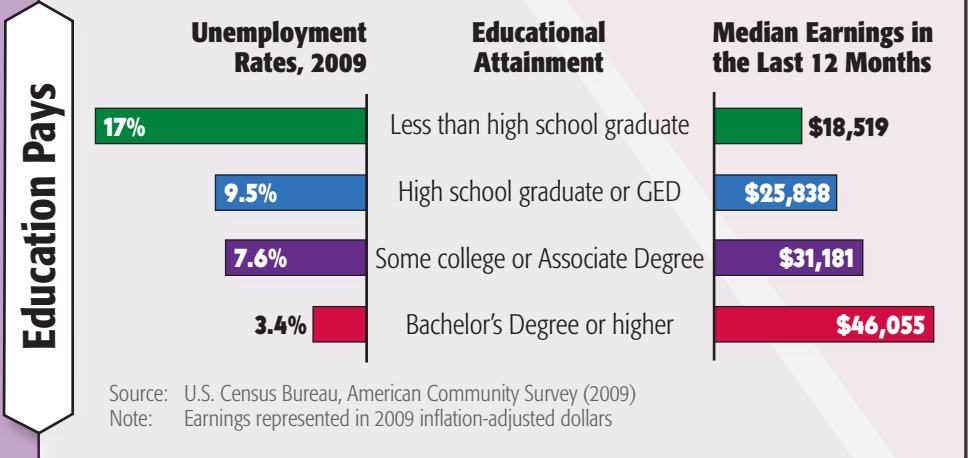
By making plans now; exploring your career options through after-school activities, job shadowing and the Internet; and connecting your high school education with a career and further training, you get on a path to success.

Sources: U.S. Department of Labor (2006)
American Diploma Project (2004)



my Top 5 School or College, and Program

- _____
- _____
- _____
- _____
- _____



THE ROAD TO RICHES IS PAVED BY EDUCATION — The more education you have, the more money you are likely to make and the less likely you are to be unemployed, or so the data suggest. In 2009, Missouri workers age 25 to 64 with a high school diploma earned an average of \$25,838 per year, while those with a bachelor's degree earned an average of \$42,305 per year and those with a graduate or professional degree earned an annual average of \$52,551. Unemployment was nearly twice as high for Missourians who did not complete high school than for those with a high school diploma or GED® credential.

Arts, A/V Technology and Communications

Audio and Video Technology and Film
Printing Technology
Visual Arts
Performing Arts
Journalism and Broadcasting
Telecommunications

Information Technology

Network Systems
Information Support and Services
Web and Digital Communications
Programming and Software Development

Business Management and Administration

General Management
Human Resources Management
Business Information Management
Administrative Support
Operations Management

Marketing

Marketing Management
Marketing Communications
Marketing Research
Professional Sales
Merchandising

Finance

Securities and Investments
Business Finance
Banking Services
Insurance
Accounting

Health Science

Biotechnology Research and Development
Therapeutic Services
Diagnostics Services
Health Informatics
Support Services

Health Services

Health Path

Arts & Communication

Creative Path

Essential Knowledge & Skills

Academic Foundations
Ethics & Legal Responsibilities
Systems Leadership & Teamwork
Informational Technology Applications
Employability & Career Development
Problem Solving & Critical Thinking
Safety, Health & Environmental
Communications
Technical Skills

Business, Management & Technology

Business Path

Natural Resources Agriculture

Nature Path

Agriculture, Food and Natural Resources

Agribusiness Systems
Animal Systems
Food Products and Processing Systems
Natural Resources and Environmental Service Systems
Power, Structural and Technical Systems
Plant Systems

Manufacturing

Production
Manufacturing Production
Process Development
Maintenance, Installation and Repair
Quality Assurance
Logistics and Inventory Control
Health, Safety and Environmental Assurance

Transportation, Distribution and Logistics

Transportation Operations
Logistics, Planning and Management Services
Warehousing and Distribution Center Operations
Facility and Mobile Equipment Maintenance
Transportation Systems and Infrastructure Planning, Management and Regulation
Health, Safety and Environmental Management
Sales and Services

Science, Technology, Engineering and Mathematics

Engineering and Technology
Science and Math

Architecture and Construction

Design and Pre-Construction
Construction
Maintenance and Operations

Human Services

Early Childhood Development and Services
Counseling and Mental Health Services
Family and Community Services
Personal Care Services
Consumer Services

Hospitality and Tourism

Restaurants and Food and Beverage Services
Recreation, Amusement and Attractions
Travel and Tourism
Lodging

Government and Public Administration

Public Management and Administration
Governance
National Security
Foreign Service
Planning
Revenue and Taxation
Regulation

Law, Public Safety, Corrections and Security

Correction Services
Emergency and Fire Management Services
Security and Protective Services
Law Enforcement Services
Legal Services

Education and Training

Administration and Administrative Support
Professional Support Services
Teaching and Training

Career Paths

Missouri has identified six Career Paths as a way to help you become aware of and explore careers in a logical and meaningful way. Career Paths are a good starting point for your career exploration.

Career Clusters

Within the six Career Paths are 16 Career Clusters to further help with career exploration and career planning. It is recommended that you select a Career Cluster of interest before or during high school to shape your plans for coursework. Remember, because the Career Clusters framework recommends rigorous academic coursework for all students, changing your mind won't put you behind. As a high school student, choosing a Career Cluster is about selecting an area for deeper exploration, not locking in a life-long career plan.

Career Pathways

When you are ready to narrow things even further, there are two to seven Career Pathways within each Career Cluster. The Career Pathways can help you in two ways. If you're sure about your Career Cluster of interest, you could select a Career Pathway of interest and hone your plans that much more.

Check It Out!

www.missouriconnections.org
www.careerclusters.org
www.missourieconomy.org
www.thefutureschannel.com
www.going2college.org
www.dreamit-doit.com
www.dhe.mo.gov

The Department of Elementary and Secondary Education does not discriminate on the basis of race, color, national origin, sex, disability, or age in its programs and activities. Inquiries related to Department programs and to the location of services, activities, and facilities that are accessible by persons with disabilities may be directed to the Jefferson State Office Building, Civil Rights Compliance (Title VI/Title IX/504/ADA/Age Act), 5th Floor, 205 Jefferson Street, Jefferson City, MO 65102-0480; telephone number 573-526-4757 or Relay Missouri 800-735-2966.