



Use a QR code reader app to scan codes with your phone or tablet for more information.

Rock YOUR World

HOW WILL YOU EARN A LIVING ...
... AND SPEND YOUR LIFE?

A Message for Parents ...

10 Key Things Parents Can Do To Support Their Child's Future

1. Tell your child you are proud of them.
2. Listen to your child and express interest in those things they care about.
3. Help your child understand who they are and what makes them special.
4. Recognize the unique nature of your child and their career path.
5. Be involved in school activities and support school work.
6. Set a good example of school and work attitudes and behaviors.
7. Use everyday life activities to provide opportunities for your children to develop important life and work skills.
8. Encourage your child to make the most of career-related activities in school and the community.
9. Believe that education after high school is possible for your child.
10. Have high expectations.



Adapted from "10 Ways You Can Support Your Child's Future,"
Oregon's Partnership for Occupational & Career Information

for Students

An Eye for Opportunity

When looking at your career choices, take the time to explore whether there are certification programs for your field. Certifications, on their own or in addition to a degree, are necessary in some fields and can make the difference in a future job search.

Also, don't overlook certification programs that may lead to your target career. A one- or two-year certificate could provide not only valuable job experience, but also money while you complete your studies.

for Parents

Keeping an Open Mind

A four-year baccalaureate degree may seem like a ticket to success. However, in today's job market, it may not always be. There are many excellent options to pursue:

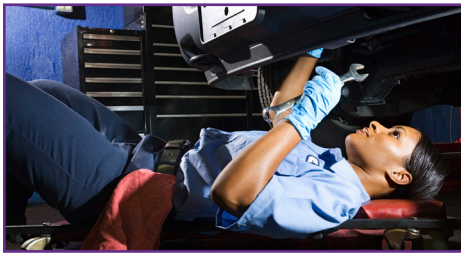
- One- and two-year certificate programs
- Community college programs
- Apprenticeships
- Military training

Keep an open mind when it comes to your child's future.

Your Life, Your Choices

Planning for the future can be a challenge, but it also presents an exciting opportunity. By taking time to explore your options and consider career paths that may best suit your personality, you can increase your chances to have and be able to do the things you want later in life.

This magazine presents a few ways to explore your own interests and some career options that are open to you. To follow the career path of your choosing, you will need to further explore educational or training opportunities. Right now, most jobs that pay a wage that can support a family require education beyond high school. While a four-year degree offers a solid foundation for many people, there are many jobs in the skilled trades. Apprenticeships, technical schools, community colleges, and the military all provide an excellent foundation for a career.



Beyond Stereotypes

Don't limit your search for a great career by stereotypes about what kind of people do certain jobs. Completing an interest profiler in an open, honest manner may lead you to explore surprising options.



Options for Further Education and Training:

- Four-year university
- Community college
- Trade or technical school
- On-the-job training
- Apprenticeships
- Military



Budgeting tools.

money

In the average household, only about 13% of after-tax income is available for entertainment, clothing, vacations, charitable donations, and other nonessential expenses. Saving for the future and establishing a budget are important ways that you can have the things you want later by planning now.



Housing & utilities: 41%

Transportation: 16%

Healthcare, insurance & savings: 17%

Food: 13%

Entertainment, clothes, everything else: 13%

Source: Bureau of Labor Statistics

What's Your Process?

The career development process can help you find a career path that matches your interests and make a plan to meet your goals.

1 assess

**What do you want?
What are you good at?**

Start by assessing yourself, what direction you would like to take your career, your interests, your strengths.

Primary Interest Area

Secondary Interest Areas

act

**What are
the steps to
accomplish?**

Keep your plan on hand so you can remember what you decided to do and how the pieces fit together.

Action Steps



Track your progress.

2 explore

**What career clusters
match your interests?**

Explore different careers and educational or training programs available.

Career Cluster

Occupations of Interest

Educational/Training Program

3 decide

**What do you need to
do first to get there?**

Decide on a plan of action, and put it to work.

Short-Term Goals



Know Yourself & Your Options

As you plan your future, it is helpful to explore your own interests and what is involved for a variety of different kinds of jobs. Sometimes, the path to a job is a significant part of determining whether that job is right for you.

As you learn and practice new skills or information, your brain will grow with you. Things that seem difficult or impossible at first can become second-nature. At the same time, it is important to recognize your personal strengths and preferences.


If you just can't bring yourself to write research papers, then a career path that requires an advanced degree may not be the best choice. At the same time, if you thrive in a crisis, emergency medical and law enforcement careers may be a perfect fit. Don't limit yourself by stereotypes, either. There are many male nurses and female mechanics.

Look at Earnings

Source: Missouri Department of Economic Development (2010).

Firefighter	\$22K	\$42K	\$52K
Hairdresser	\$17K		\$27K
Police Officer	\$28K		\$50K
Real Estate Agent	\$22K	\$49K	\$63K
Electrician	\$36K	\$56K	\$66K
Plumber	\$33K	\$57K	\$69K
Construction Manager	\$52K	\$83K	\$99K
Paralegal	\$32K		\$56K
Registered Nurse	\$41K	\$60K	\$70K
Accountant	\$36K	\$63K	\$76K
Computer Analyst	\$52K	\$79K	\$92K
High School Teacher	\$31K		\$52K
Graphic Designer	\$27K	\$44K	\$52K
School Principal	\$64K	\$87K	\$99K
Lawyer	\$52K	\$109K	\$137K
Veterinarian	\$52K	\$77K	\$89K

Annual Earnings

	Beginning
	Median
	Experienced

IT'S A LIVING. Different careers require different levels of training. Blue shows jobs that need a certificate, green for Associate's Degree, yellow for Bachelor's Degree, and orange for an advanced degree.



Online
profiler.

profiler

Pages 4-9 provide an interest profiler to help you explore career interests.

O*NET Interest Profiler © 2000, U.S. Department of Labor. All rights reserved.

O*NET™ is a trademark of the U.S. Department of Labor, Employment and Training Administration.

Find out about jobs in the 16 Career Clusters on pages 10-19.

The interest profiler questions describe work activities that some people do at their jobs. Read each question carefully and decide whether or not you would like to do the activity.

There are no right or wrong answers to the questions. The goal is for you to learn more about your personal work-related interests.

Try not to think about:

1. Whether you have enough education or training to perform the activity, or
2. How much money you would make performing the activity.

Simply think about whether you would "like" or "dislike" performing the work activity.

Interest Profiler – What is Your Interest Type?

How to mark your answers:

L If you think you would **LIKE** the work activity, fill in the box containing the L next to the question.

D If you think you would **DISLIKE** the work activity, fill in the box containing the D next to the question.

? If you are **UNSURE** whether you would like the work activity, fill in the box containing the ? next to the question.

Answer the questions in the right order!

The work activity questions begin on this page. It is important that you work from the top to the bottom in each column of questions.

Start with question #1 at the top of the first column and continue down the first column until you reach the bottom of the page. Then go to the top of the second column and answer all the questions in that column until you reach the bottom of the page. Continue to work down each column until you have finished all four pages of questions.

Please be sure to complete all of the questions. When you have completed the questions, continue to the following page to score your interest profiler.

O*NET Interest Profiler copyright 2000, U.S. Department of Labor, Employment and Training Administration. All rights reserved. O*NET™ is a trademark of the U.S. Department of Labor, Employment and Training Administration.

1. Build kitchen cabinets	L ? D	13. Operate a dairy farm	L ? D	25. Monitor a machine on an assembly line	L ? D
2. Guard money in an armored car	L ? D	14. Lay brick or tile	L ? D	26. Repair household appliances	L ? D
3. Study space travel	L ? D	15. Study the history of past civilizations	L ? D	27. Develop a new medicine	L ? D
4. Make a map of the bottom of an ocean	L ? D	16. Study animal behavior	L ? D	28. Plan a research study	L ? D
5. Conduct a symphony orchestra	L ? D	17. Direct a play	L ? D	29. Write books or plays	L ? D
6. Write stories or articles for magazines	L ? D	18. Create dance routines for a show	L ? D	30. Play a musical instrument	L ? D
7. Teach an individual an exercise routine	L ? D	19. Give CPR to someone who has stopped breathing	L ? D	31. Teach children how to read	L ? D
8. Perform nursing duties in a hospital	L ? D	20. Help people with personal or emotional problems	L ? D	32. Work with mentally disabled children	L ? D
9. Buy and sell stocks and bonds	L ? D	21. Sell telephone and other communication equipment	L ? D	33. Sell merchandise over the telephone	L ? D
10. Manage a retail store	L ? D	22. Operate a beauty salon or barber shop	L ? D	34. Run a stand that sells newspaper and magazines	L ? D
11. Develop a spreadsheet using computer software	L ? D	23. Use a computer program to generate customer bills	L ? D	35. Keep accounts payable/receivable for an office	L ? D
12. Proofread records or forms	L ? D	24. Schedule conferences for an organization	L ? D	36. Load computer software into a large computer network	L ? D

Continue at the top of the next column.

Continue at the top of the next column.

Continue at the top of the next page.

Interest Profiler – What is Your Interest Type?

37. Drive a taxi cab	L ? D	49. Raise fish in a fish hatchery	L ? D	61. Assemble electronic parts	L ? D	73. Paint houses	L ? D
38. Install flooring in houses	L ? D	50. Build a brick walkway	L ? D	62. Drive a truck to deliver packages to offices and homes	L ? D	74. Enforce fish and game laws	L ? D
39. Study ways to reduce water pollution	L ? D	51. Determine the infection rate of a new disease	L ? D	63. Diagnose and treat sick animals	L ? D	75. Conduct chemical experiments	L ? D
40. Develop a new medical treatment or procedure	L ? D	52. Study rocks and minerals	L ? D	64. Study the personalities of world leaders	L ? D	76. Conduct biological research	L ? D
41. Perform comedy routines in front of an audience	L ? D	53. Write reviews of books or plays	L ? D	65. Act in a movie	L ? D	77. Draw pictures	L ? D
42. Perform as an extra in movies, plays or television shows	L ? D	54. Compose or arrange music	L ? D	66. Dance in a Broadway show	L ? D	78. Sing professionally	L ? D
43. Teach an elementary school class	L ? D	55. Supervise the activities of children at a camp	L ? D	67. Perform rehabilitation therapy	L ? D	79. Help elderly people with their daily activities	L ? D
44. Give career guidance to people	L ? D	56. Help people with family-related problems	L ? D	68. Do volunteer work at a non-profit organization	L ? D	80. Teach children how to play sports	L ? D
45. Give a presentation about a product you are selling	L ? D	57. Sell compact disks and tapes at a music store	L ? D	69. Manage the operations of a hotel	L ? D	81. Sell candy and popcorn at sports events	L ? D
46. Buy and sell land	L ? D	58. Run a toy store	L ? D	70. Sell houses	L ? D	82. Manage a supermarket	L ? D
47. Transfer funds between banks using a computer	L ? D	59. Use a word processor to edit and format documents	L ? D	71. Direct or transfer phone calls for a large organization	L ? D	83. Compute and record statistical and other numerical data	L ? D
48. Organize and schedule office meetings	L ? D	60. Operate a calculator	L ? D	72. Perform office filing tasks	L ? D	84. Generate the monthly payroll checks for an office	L ? D

Continue at the top of the next column.

Continue at the top of the next column.

Continue at the top of the next column.

Continue at the top of the next page.

Interest Profiler – What is Your Interest Type?

85. Operate a grinding machine in a factory	L ? D	97. Perform lawn care services	L ? D	109. Catch fish as a member of a fishing crew	L ? D	121. Fix a broken faucet	L ? D
86. Work on an offshore oil-drilling rig	L ? D	98. Assemble products in a factory	L ? D	110. Refinish furniture	L ? D	122. Do cleaning or maintenance work	L ? D
87. Study the population growth of a city	L ? D	99. Investigate crimes	L ? D	111. Examine blood samples using a microscope	L ? D	123. Study the structure of the human body	L ? D
88. Study whales and other types of marine life	L ? D	100. Study the movement of planets	L ? D	112. Investigate the causes of a fire	L ? D	124. Develop psychological profiles of criminals	L ? D
89. Perform stunts for a movie or television show	L ? D	101. Conduct a musical choir	L ? D	113. Paint sets for plays	L ? D	125. Design sets for plays	L ? D
90. Create special effects for movies	L ? D	102. Act in a play	L ? D	114. Audition singers and musicians for a musical show	L ? D	126. Announce a radio show	L ? D
91. Help disabled people improve their daily living skills	L ? D	103. Help people who have problems with drugs or alcohol	L ? D	115. Help families care for ill relatives	L ? D	127. Plan exercises for disabled patients	L ? D
92. Teach sign language to people with hearing disabilities	L ? D	104. Help conduct a group therapy session	L ? D	116. Provide massage therapy to people	L ? D	128. Counsel people who have a life-threatening illness	L ? D
93. Manage a department within a large company	L ? D	105. Sell refreshments at a movie theater	L ? D	117. Start your own business	L ? D	129. Represent a client in a lawsuit	L ? D
94. Sell a soft drink product line to stores and restaurants	L ? D	106. Sell hair-care products to stores and salons	L ? D	118. Negotiate business contracts	L ? D	130. Negotiate contracts for professional athletes	L ? D
95. Take notes during a meeting	L ? D	107. Calculate the wages of employees	L ? D	119. Type labels for envelopes and packages	L ? D	131. Develop an office filing system	L ? D
96. Keep shipping and receiving records	L ? D	108. Assist senior-level accountants in performing bookkeeping tasks	L ? D	120. Inventory supplies using a hand-held computer	L ? D	132. Keep records of financial transactions for an organization	L ? D

Continue at the top of the next column.

Continue at the top of the next column.

Continue at the top of the next column.

Continue at the top of the next page.

Interest Profiler – What is Your Interest Type?

133. Maintain the grounds of a park	L ? D	145. Spray trees to prevent the spread of harmful insects	L ? D	157. Operate a motorboat to carry passengers	L ? D	169. Set up and operate machines to make products	L ? D
134. Operate a machine on a production line	L ? D	146. Test the quality of parts before shipment	L ? D	158. Repair and install locks	L ? D	170. Put out forest fires	L ? D
135. Develop a way to better predict the weather	L ? D	147. Invent a replacement for sugar	L ? D	159. Study the governments of different countries	L ? D	171. Do laboratory tests to identify diseases	L ? D
136. Work in a biology lab	L ? D	148. Study genetics	L ? D	160. Do research on plants or animals	L ? D	172. Study weather conditions	L ? D
137. Write scripts for movies or television shows	L ? D	149. Perform jazz or tap dance	L ? D	161. Sing in a band	L ? D	173. Edit movies	L ? D
138. Write a song	L ? D	150. Direct a movie	L ? D	162. Design artwork for magazines	L ? D	174. Pose for a photographer	L ? D
139. Teach disabled people work and living skills	L ? D	151. Take care of children at a day-care center	L ? D	163. Assist doctors in treating patients	L ? D	175. Provide physical therapy to people recovering from an injury	L ? D
140. Organize activities at a recreational facility	L ? D	152. Organize field trips for disabled people	L ? D	164. Work with juveniles on probation	L ? D	176. Teach a high-school class	L ? D
141. Be responsible for the operation of a company	L ? D	153. Sell newspaper advertisements	L ? D	165. Sell automobiles	L ? D	177. Sell restaurant franchises to individuals	L ? D
142. Market a new line of clothing	L ? D	154. Sell merchandise at a department store	L ? D	166. Manage a clothing store	L ? D	178. Sell computer equipment in a store	L ? D
143. Record information from customers applying for charge accounts	L ? D	155. Record rent payments	L ? D	167. Keep inventory records	L ? D	179. Stamp, sort, and distribute mail for an organization	L ? D
144. Photocopy letters and reports	L ? D	156. Enter information into a database	L ? D	168. Maintain employee records	L ? D	180. Handle customers' bank transactions	L ? D

Continue at the top of the next column.

Continue at the top of the next column.

Continue at the top of the next column.

All done! Turn the page to finish your profile.

Interest Profiler – What is Your Interest Type?

Now that you have completed the interest profiler, take some time for scoring. It is important to make sure you count the number of “Likes” correctly. Double-check your totals. Remember that interests are just one piece of the puzzle to explore careers. Also consider your abilities, work values, experience, education, and things that motivate you while exploring careers.

realistic

Pages 4 & 5 Count the number of “Likes” you filled in for both rows of green questions on pages 4 and 5, and write that number here.

+

Pages 6 & 7 Turn to pages 6 and 7. Count the number of “Likes” you filled in for both rows of green questions on pages 6 and 7, and write that number here.

=

Total = Realistic Now, add the numbers in the two boxes and write the total here. This is your Realistic score.

conventional

Pages 4 & 5 Count the number of “Likes” you filled in for both rows of blue questions on pages 4 and 5, and write that number here.

+

Pages 6 & 7 Turn to pages 6 and 7. Count the number of “Likes” you filled in for both rows of blue questions on pages 6 and 7, and write that number here.

=

Total = Conventional Now, add the numbers in the two boxes and write the total here. This is your Conventional score.

enterprising

Pages 4 & 5 Count the number of “Likes” you filled in for both rows of yellow questions on pages 4 and 5, and write that number here.

+

Pages 6 & 7 Turn to pages 6 and 7. Count the number of “Likes” you filled in for both rows of yellow questions on pages 6 and 7, and write that number here.

=

Total = Enterprising Now, add the numbers in the two boxes and write the total here. This is your Enterprising score.

social

Pages 4 & 5 Count the number of “Likes” you filled in for both rows of purple questions on pages 4 and 5, and write that number here.

+

Pages 6 & 7 Turn to pages 6 and 7. Count the number of “Likes” you filled in for both rows of purple questions on pages 6 and 7, and write that number here.

=

Total = Social Now, add the numbers in the two boxes and write the total here. This is your Social score.

artistic

Pages 4 & 5 Count the number of “Likes” you filled in for both rows of orange questions on pages 4 and 5, and write that number here.

+

Pages 6 & 7 Turn to pages 6 and 7. Count the number of “Likes” you filled in for both rows of orange questions on pages 6 and 7, and write that number here.

=

Total = Artistic Now, add the numbers in the two boxes and write the total here. This is your Artistic score.

investigative

Pages 4 & 5 Count the number of “Likes” you filled in for both rows of red questions on pages 4 and 5, and write that number here.

+

Pages 6 & 7 Turn to pages 6 and 7. Count the number of “Likes” you filled in for both rows of red questions on pages 6 and 7, and write that number here.

=

Total = Investigative Now, add the numbers in the two boxes and write the total here. This is your Investigative score.

Interest Profiler – What is Your Interest Type?

Primary Interest Area

Which interest area has your highest score?

Secondary Interest Areas

Which interest areas have your next highest scores?



realistic

Realistic people are DOERS.

Personality Traits You are practical, reserved, curious, and persistent. You are good at solving problems. You prefer to work with things like machines, tools, and greenery.

Hobbies & Career Interests You like to work with your hands to build or fix things. You like to play sports and be physically active. You prefer outdoor activities. You are good at electronics, mechanics, engineering, lab work, farming, or carpentry work.



conventional

Conventional people are ORGANIZERS.

Personality Traits You are respectful, orderly, persistent, and practical. You like working with numbers and are good at following instructions. You like working in structured situations with set goals and deadlines.

Hobbies & Career Interests You are detail oriented and enjoy working with data. You are good at following budgets and creating reports. You like to make sure that systems and projects work efficiently.



enterprising

Enterprising people are PERSUADERS.

Personality Traits You are enthusiastic, assertive, adventurous, and talkative. You like to start new projects and make decisions that affect others. You like to work with other people and often prefer to be in leadership positions.

Hobbies & Career Interests You enjoy influencing, persuading, and performing. You are good at selling things, promoting ideas, and managing people. You may enjoy starting your own business or running for political office.



social

Social people are HELPERS.

Personality Traits You are friendly, empathetic, cooperative, and responsible. You like to work directly with people rather than things. You prefer to work as part of a team and sometimes lead or coordinate activities.

Hobbies & Career Interests You enjoy teaching, counseling, or curing others. You might be a good public speaker or trainer. You may like playing team sports. You like to work with children, the elderly, people with special needs, or diverse populations.



artistic

Artistic people are CREATORS.

Personality Traits You are intuitive, sensitive, and imaginative. You prefer to work in unstructured situations. You like to work where you can use your creativity and come up with new ideas.

Hobbies & Career Interests You enjoy performing or creating visual arts. You like to go to museums. You may like to attend concerts or plays. You might enjoy fashion, creative writing, drawing, and creating new things in a variety of settings.



investigative

Investigative people are THINKERS.

Personality Traits You are curious, observant, and analytical. You like to work independently rather than on a team.

Hobbies & Career Interests You are good at math or science. You may enjoy analyzing data. You like to solve puzzles and figure out difficult problems. You enjoy reading, investigating and research, or using scientific or computer equipment.

CAREER PATHS & Career Clusters

INDUSTRIAL & ENGINEERING TECHNOLOGY
Architecture & Construction
Manufacturing
Transportation, Distribution & Logistics
Science, Technology, Engineering & Math

HEALTH SERVICES

Health Science

Missouri schools use the Career Paths and Career Clusters frameworks as tools for career exploration.

The 16 Career Clusters are listed here with the 6 Career Paths.

ARTS & COMMUNICATION

Arts, A/V Technology & Communications



Explore careers.

Connect your interest areas with the best-match Career Clusters using the information on the next page.

More information about each Career Cluster can be found on pages 12-19.

BUSINESS, MANAGEMENT & TECHNOLOGY

Business Management & Administration
Finance
Information Technology
Marketing

HUMAN SERVICES

Education & Training
Government & Public Administration
Hospitality & Tourism
Human Services
Law, Public Safety, Corrections & Security

NATURAL RESOURCES AGRICULTURE

Agriculture, Food & Natural Resources



WHICH CAREER CLUSTERS MATCH YOUR INTEREST AREAS?

R - Realistic

- AGRICULTURE, FOOD AND NATURAL RESOURCES
- ARCHITECTURE AND CONSTRUCTION
- ARTS, A/V TECHNOLOGY AND COMMUNICATION
- HEALTH SCIENCE
- HOSPITALITY AND TOURISM
- INFORMATION TECHNOLOGY
- LAW, PUBLIC SAFETY, CORRECTIONS AND SECURITY
- MANUFACTURING
- SCIENCE, TECHNOLOGY, ENGINEERING AND MATH
- TRANSPORTATION, DISTRIBUTION AND LOGISTICS

I - Investigative

- HEALTH SCIENCE
- INFORMATION TECHNOLOGY
- LAW, PUBLIC SAFETY, CORRECTIONS AND SECURITY
- SCIENCE, TECHNOLOGY, ENGINEERING AND MATH

A - Artistic

- ARTS, A/V TECHNOLOGY AND COMMUNICATIONS
- EDUCATION AND TRAINING
- HOSPITALITY AND TOURISM
- HUMAN SERVICES
- MARKETING, SALES AND SERVICE

S - Social

- ARTS, A/V TECHNOLOGY AND COMMUNICATIONS
- EDUCATION AND TRAINING
- GOVERNMENT AND PUBLIC ADMINISTRATION
- HEALTH SCIENCE
- HUMAN SERVICES
- LAW, PUBLIC SAFETY, CORRECTIONS AND SECURITY
- MARKETING, SALES AND SERVICE

E - Enterprising

- ARTS, A/V TECHNOLOGY AND COMMUNICATIONS
- BUSINESS, MANAGEMENT AND ADMINISTRATION
- FINANCE
- GOVERNMENT AND PUBLIC ADMINISTRATION
- HOSPITALITY AND TOURISM
- LAW, PUBLIC SAFETY, CORRECTIONS AND SECURITY
- MARKETING, SALES AND SERVICE

C - Conventional

- ARCHITECTURE AND CONSTRUCTION
- BUSINESS, MANAGEMENT AND ADMINISTRATION
- FINANCE
- HEALTH SCIENCE
- MANUFACTURING
- MARKETING, SALES AND SERVICE
- TRANSPORTATION, DISTRIBUTION AND LOGISTICS

R and I - Realistic and Investigative

- HEALTH SCIENCE
- INFORMATION TECHNOLOGY
- SCIENCE, TECHNOLOGY, ENGINEERING AND MATH

R and A - Realistic and Artistic

- ARTS, A/V TECHNOLOGY AND COMMUNICATIONS

R and S - Realistic and Social

- HEALTH SCIENCE
- HUMAN SERVICES
- LAW, PUBLIC SAFETY, CORRECTIONS AND SECURITY

R and E - Realistic and Enterprising

- ARTS, A/V TECHNOLOGY AND COMMUNICATIONS
- HOSPITALITY AND TOURISM

R and C - Realistic and Conventional

- ARCHITECTURE AND CONSTRUCTION
- MANUFACTURING
- TRANSPORTATION, DISTRIBUTION AND LOGISTICS

I and S - Investigative and Social

- HEALTH SCIENCE

A and S - Artistic and Social

- EDUCATION AND TRAINING

A and E - Artistic and Enterprising

- ARTS, A/V TECHNOLOGY AND COMMUNICATIONS

S and E - Social and Enterprising

- GOVERNMENT AND PUBLIC ADMINISTRATION
- LAW, PUBLIC SAFETY, CORRECTIONS AND SECURITY
- MARKETING, SALES AND SERVICE

E and C - Enterprising and Conventional

- FINANCE
- HEALTH SCIENCE

Adapted from the ISEEK website,
www.iseek.org.

Career Cluster

AGRICULTURE, FOOD, AND NATURAL RESOURCES

Biosciences

Biosciences is a target industry in Missouri. Top jobs in the biosciences sector include chemist, veterinarian, veterinarian tech, and general operations managers.



Career Pathways

- AGRIBUSINESS SYSTEMS
- ANIMAL SYSTEMS
- FOOD PRODUCTS AND PROCESSING SYSTEMS
- NATURAL RESOURCES AND ENVIRONMENTAL SERVICES SYSTEMS
- POWER, STRUCTURAL AND TECHNICAL SYSTEMS
- PLANT SYSTEMS

What's it about? The production, processing, marketing, distribution, financing, and development of agricultural commodities and resources including food, fiber, wood products, natural resources, horticulture, and other plant and animal products/resources.

Career Cluster

ARCHITECTURE AND CONSTRUCTION

Consider Carpentry

Carpenters are among Missouri's top-rated occupations, with an average annual wage over \$44,000 and more than 10,000 openings expected in Missouri this decade.



Career Pathways

- DESIGN AND PRE-CONSTRUCTION
- CONSTRUCTION
- MAINTENANCE AND OPERATIONS

What's it about? Careers in designing, planning, managing, building and maintaining the built environment.

Career Cluster ARTS, A/V TECHNOLOGY AND COMMUNICATIONS

Many Options

Career options in the arts include animators, multimedia, architects, photographers, fashion designers, graphic designers, and interior designers.



Career Pathways

- AUDIO AND VIDEO TECHNOLOGY AND FILM
- PRINTING TECHNOLOGY
- VISUAL ARTS
- PERFORMING ARTS
- JOURNALISM AND BROADCASTING
- TELECOMMUNICATIONS

What's it about? Designing, producing, exhibiting, performing, writing, and publishing multimedia content including visual and performing arts and design, journalism, and entertainment services.

Career Cluster BUSINESS MANAGEMENT AND ADMINISTRATION

Missouri Business

Openings for personal financial advisors and insurance sales agents are expected to be plentiful, and average annual wages are \$76,000 and \$61,600 respectively.



Career Pathways

- GENERAL MANAGEMENT
- HUMAN RESOURCES MANAGEMENT
- BUSINESS INFORMATION MANAGEMENT
- ADMINISTRATIVE SUPPORT
- OPERATIONS MANAGEMENT

What's it about? Careers in planning, organizing, directing, and evaluating business functions essential to efficient and productive business operations.

Career Cluster EDUCATION AND TRAINING

Teaching Careers

Elementary, middle school, and secondary school teaching positions are rated Grade A careers by the Missouri Economic Research and Information Center over the next 10 years.



Career Pathways

- ADMINISTRATION AND ADMINISTRATIVE SUPPORT
- PROFESSIONAL SUPPORT SERVICES
- TEACHING AND TRAINING

What's it about? Planning, managing, and providing education and training services, and related learning support services such as administration, teaching/training, administrative support, and professional support services.

Career Cluster FINANCE

Many Missouri Jobs in Accounting

On average, accountants and auditors earn almost \$60,000 a year in Missouri, and over 1,000 openings are expected each year.



Career Pathways

- ACCOUNTING
- INSURANCE
- BANKING SERVICES
- BUSINESS FINANCE
- SECURITIES AND INVESTMENTS

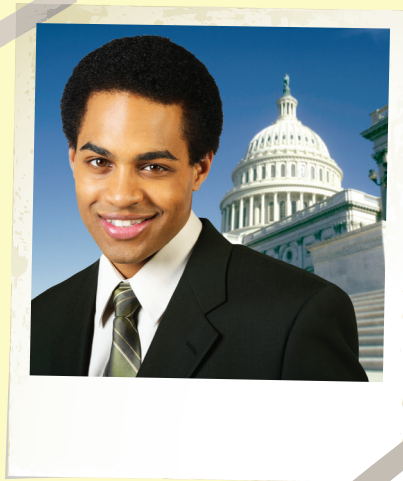
What's it about? Planning and related services for financial and investment planning, banking, insurance, and business financial management.

Career Cluster

GOVERNMENT AND PUBLIC ADMINISTRATION

e-Government

Missouri ranks 10th among the states for its e-government economic sector.



Career Pathways

- PUBLIC MANAGEMENT AND ADMINISTRATION
- GOVERNANCE
- NATIONAL SECURITY
- FOREIGN SERVICE
- PLANNING
- REVENUE AND TAXATION
- REGULATION

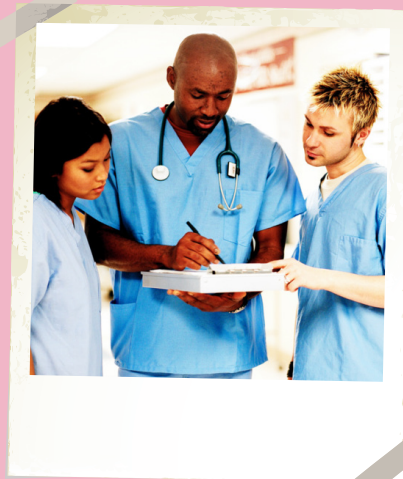
What's it about? Planning and executing government functions at the local, state, and federal levels, including governance, national security, foreign service, planning, revenue and taxation, and regulations.

Career Cluster

HEALTH SCIENCE

Nurses in Demand

Registered Nurse is one of the top-rated jobs in Missouri. Average annual wages exceed \$59,000, and over 2,4000 openings are expected every year.



Career Pathways

- BIOTECHNOLOGY RESEARCH AND DEVELOPMENT
- THERAPEUTIC SERVICES
- DIAGNOSTICS SERVICES
- HEALTH INFORMATICS
- SUPPORT SERVICES

What's it about? Planning, managing, and providing therapeutic services, diagnostic services, health informatics, support services, and biotechnology research and development.

Career Cluster HOSPITALITY AND TOURISM

Tourism Jobs

More than 281,000 people in Missouri earn a living working in tourism, including organizers, food and beverage, accommodations, entertainment, retail, travel services, and more.



Career Pathways

- RESTAURANTS AND FOOD AND BEVERAGE SERVICES
- RECREATION, AMUSEMENT AND ATTRACTIONS
- TRAVEL AND TOURISM
- LODGING

What's it about? Preparing individuals for employment in career pathways that relate to families and human needs such as restaurant and food/beverage services, lodging, travel and tourism, recreation, amusement, and attractions.

Career Cluster HUMAN SERVICES

Social Work

Medical and public health social worker is a top-rated occupation in Missouri. Positions often require a bachelor's degree or higher, but average annual wages are nearly \$41,000.



Career Pathways

- EARLY CHILDHOOD DEVELOPMENT AND SERVICES
- COUNSELING AND MENTAL HEALTH SERVICES
- FAMILY AND COMMUNITY SERVICES
- PERSONAL CARE SERVICES
- CONSUMER SERVICES

What's it about? Preparing individuals for employment in career pathways that relate to families and human needs such as counseling and mental health services, family and community services, personal care, and consumer services.

Career Cluster

INFORMATION TECHNOLOGY

Health I.T.

Missouri ranks sixth in the nation for the health information technology sector. This rating is based on the number of high-tech firms, entrepreneurship, and concentration of workers with a two-year degree or higher.



Career Pathways

- NETWORK SYSTEMS
- INFORMATION SUPPORT AND SERVICES
- WEB AND DIGITAL COMMUNICATIONS
- PROGRAMMING AND SOFTWARE DEVELOPMENT

What's it about? Building linkages in information technology occupations for entry level, technical, and professional careers related to the design, development, support, and management of hardware, software, multimedia, and system integration services.

Career Cluster

LAW, PUBLIC SAFETY, CORRECTIONS AND SECURITY

Policing Jobs

Police and sheriff's patrol officer positions are rated a Grade A career by the Missouri Economic Research and Information Center over the next 10 years.



Career Pathways

- CORRECTION SERVICES
- EMERGENCY AND FIRE MANAGEMENT SERVICES
- SECURITY AND PROTECTIVE SERVICES
- LAW ENFORCEMENT SERVICES
- LEGAL SERVICES

What's it about? Planning, managing, and providing legal, public safety, protective services, and homeland security, including professional and technical support services.

Career Cluster MANUFACTURING

Advanced Manufacturing

Within advanced manufacturing occupations, 14% are low skill, 60% are middle skill, and 26% are high skill. Education and training are needed for middle and high skill jobs.



Career Pathways

- PRODUCTION
- MANUFACTURING PRODUCTION PROCESS DEVELOPMENT
- MAINTENANCE, INSTALLATION AND REPAIR
- QUALITY ASSURANCE
- LOGISTICS AND INVENTORY CONTROL
- HEALTH, SAFETY AND ENVIRONMENTAL ASSURANCE

What's it about? Planning, managing, and performing the processing of materials into intermediate or final products and related professional and technical support activities such as production planning and control, maintenance, and manufacturing/process engineering.

Career Cluster MARKETING

Sales Occupations

Wholesale and manufacturing sales representatives are among the top jobs for Missouri, with average annual wages around \$58,000 and about 1,000 openings expected each year.



Career Pathways

- MARKETING MANAGEMENT
- MARKETING COMMUNICATIONS
- MARKETING RESEARCH
- PROFESSIONAL SALES
- MERCHANDISING

What's it about? Planning, managing, and performing marketing activities to reach organizational objectives such as brand management, professional sales, merchandising, marketing communications, and market research.

Career Cluster

SCIENCE, TECHNOLOGY, ENGINEERING AND MATH

Target Industries

Many of Missouri's target industries involve STEM careers: biosciences, information technology, energy solutions, and health sciences.



Career Pathways

- ENGINEERING AND TECHNOLOGY
- SCIENCE AND MATH

What's it about? Planning, managing, and providing scientific research and professional and technical services (e.g., physical science, social science, and engineering) including laboratory and testing services, and research and development services.

Career Cluster

TRANSPORTATION, DISTRIBUTION AND LOGISTICS

A Healthy Job Sector

In 2010, 6.6% of Missouri jobs were in the transportation sector, the same as health care practitioners and technical.



Career Pathways

- TRANSPORTATION OPERATIONS
- LOGISTICS, PLANNING AND MANAGEMENT SERVICES
- WAREHOUSING AND DISTRIBUTION CENTER OPERATIONS
- FACILITY AND MOBILE EQUIPMENT MAINTENANCE
- TRANSPORTATION SYSTEMS AND INFRASTRUCTURE PLANNING, MANAGEMENT AND REGULATION
- HEALTH, SAFETY AND ENVIRONMENTAL MANAGEMENT
- SALES AND SERVICES

What's it about? The planning, management, and movement of people, materials, and goods by road, pipeline, air, rail, and water, and related professional and technical support services such as transportation infrastructure planning and management, logistics services, mobile equipment, and facility maintenance.

Your Career Portfolio

For many careers, a portfolio of work has become a standard expectation in the hiring process. In other careers, the availability of a portfolio that summarizes a person's work and achievements can be a true asset. Gathering and maintaining a body of materials needed for a quality career portfolio only requires a bit of time and regular attention, and a place to maintain copies of records and samples. It is also worthwhile to maintain an electronic portfolio that can be shared during online job applications.

The first step is to get organized and maintain a safe place to keep papers and materials related to the career portfolio. Every few months, review the career portfolio to make sure that the materials are up to date, tidy, and appropriate for presentation. When updating career portfolio records, it is important to be sure that dates, titles, and names are correct when listing employment, awards, certifications, and other relevant information.

An electronic portfolio may also be maintained on the Missouri Connections website at www.missouriconnections.org.

from
Interests to
Plans
&
Action!



The following are examples to document in a career portfolio:

- Career-related school work
- Personal Plan of Study
- List of references with contact information
- Entrance exams
- Job shadowing experiences, including names of references and copies of correspondence
- Internships or career-related work
- Student organizations and clubs related to career interests
- Letters of recommendation
- Transcript and record of GPA and attendance
- Certifications for career readiness and career skills
- Resume



The Personal Plan of Study template on the next page can be used to outline plans for courses and activities throughout middle school and high school or to record courses and activities as they have been completed.



Name: _____
School: _____
Postsecondary Goal: _____

Career Path: _____
Career Cluster: _____
Career Pathway: _____

	English	Math	Science	Social Studies	Career Education	Other Courses	Work-Based Learning	Additional Activities
7								
8								
9								
10								
11								
12								

Postsecondary Options				
Area Career Center	Community College or Technical School	Four-Year College or University	Military Training	Apprenticeship

Looking at Your Next Steps

Shop around:

Compare information from college representatives, bulletins and websites.

Find out the job placement rates for graduates.

Ask about job placement programs and student organizations.

Make campus visits:

Tour campuses, talk with students and visit a class.

Meet with financial assistance representatives.

Research the admission requirements and academic program with an advisor.

Determine the actual cost of attending the school, including housing, books and lab fees.

Paying for your studies:

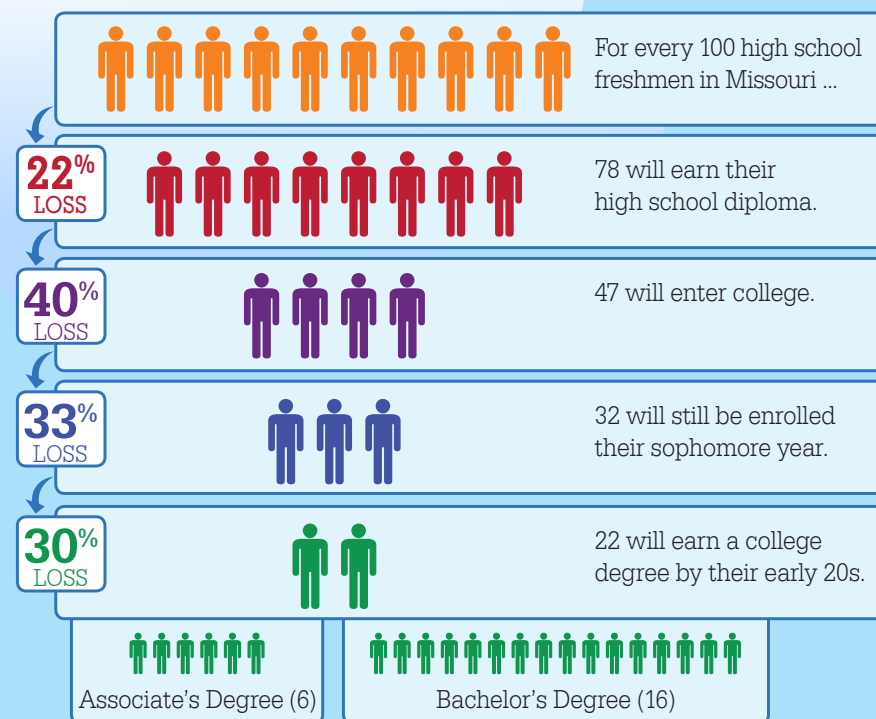
Find out about financial assistance processes and tuition payments, as well as state, federal and private sources of financial assistance.

Stay eligible for financial assistance by enrolling at least half time and making satisfactory academic progress.

Use non-repayable grant aid first. If loans are necessary, federal loans offer better benefits than private loans. Shop around for the best interest rates, borrower benefits and subsidies.

Borrow only what you need and follow an academic plan to reduce unnecessary costs.

The Thinning Crowd



DECREASING PYRAMID OF EDUCATIONAL ACHIEVEMENT. In Missouri, only 2 in 10 ninth-grade students will go on to complete a college degree by their early 20s (within 150% time for their degree). Income trends show that postsecondary education is needed to earn a family-supporting wage. Schools must do more to help students bridge transitions between educational environments and to assist students through their first year and into their second year in a new school setting.

Sources: National Center for Higher Education Management Systems (2008)

Meet deadlines:

Watch for early deadlines.

Applications for admission and housing often have a cut off date.

Pay any required fees on time.

Complete the Free Application for Federal Student Aid (FAFSA) and other financial aid forms on time.

Get advice:

Ask your school counselor to explain the options available.

Talk to your parents about your college expectations.

Visit with professionals working in the field you plan to study.



Next steps
in education.

Missouri's Top 50 Jobs



Careers in Missouri with the most job openings between 2008–2018.

For a complete listing of occupations, wages, and skills information, visit the MERIC website at www.missourieconomy.org/occupations/outlook2018.stm

Occupation	Openings	Average Annual Wage	Education
Architecture & Construction			
Cost Estimators	1,655	\$57,688	B
Electrical Power-Line Installers & Repairers	1,517	\$53,746	+
Civil Engineers	1,370	\$75,812	B
Business Management & Administration			
Accountants & Auditors	7,184	\$58,199	B
First Line Supervisors, Office Managers & Administrative Support Workers	5,946	\$47,297	↗
Business Operations Specialists, All Other	3,683	\$60,872	B
Sales Representatives, Services, All Other	3,200	\$56,813	↗
Public Relations Specialists	2,667	\$51,774	B
Training & Development Specialists	2,034	\$49,533	+
Managers, All Other	1,957	\$89,706	↗
Employment, Recruitment & Placement Specialists	1,445	\$46,262	B
Human Resources, Training & Labor Relations Specialists, All Other	1,311	\$55,967	B
Medical & Health Services Managers	1,307	\$76,512	+
Sales Managers	1,267	\$110,584	+
Compensation, Benefits & Job Analysis Specialists	1,057	\$51,012	B
Education & Training			
Elementary School Teachers, Except Special Education	10,341	\$43,715	B
Secondary School Teachers, Except Special & Career Education	7,972	\$42,765	B
Middle School Teachers, Except Special & Career Education	4,700	\$43,418	B
Special Education Teachers, Preschool, Kindergarten & Elementary School	2,666	\$45,162	B
Health Specialties Teachers, Postsecondary	1,837	\$105,867	D
Special Education Teachers, Secondary	1,806	\$47,477	B
Education Administrators, Elementary & Secondary	1,738	\$76,743	+
Education, Career Education & School Counselors	1,709	\$46,153	M
Finance			
Insurance Sales Agents	5,859	\$54,165	B
Claims Adjusters, Examiners & Investigators	2,248	\$55,253	+
Securities, Commodities & Financial Services Sales Agents	2,041	\$86,505	B
Personal Finance Advisors	1,241	\$91,284	B

Occupation	Openings	Average Annual Wage	Education
Government & Public Administration			
Compliance Officers, Except Agriculture, Construction, Health & Safety & Transportation	1,573	\$50,250	+
Health Science			
Registered Nurses	21,029	\$56,667	A
Licensed Practical Nurses	7,815	\$34,178	+
Dental Assistants	2,019	\$33,100	+
Pharmacists	1,997	\$106,242	P
Physicians & Surgeons, All Other	1,358	\$156,266	P
Physical Therapists	1,333	\$62,215	P
Radiologic Technologists & Technicians	1,283	\$47,955	A
Family & General Practitioners	1,255	\$150,983	P
Hospitality & Tourism			
Self-Enrichment Education Teachers	1,966	\$35,417	↗
Human Service			
Clergy	3,256	\$43,945	M
Child, Family & School Social Workers	1,902	\$33,277	B
Information Technology			
Computer Systems Analysts	2,761	\$72,018	B
Network Systems & Data Communications Analysts	2,510	\$74,788	B
Network & Computer Systems Administrators	2,393	\$63,197	B
Computer Software Engineers, Applications	1,905	\$76,059	B
Computer Specialists, All Other	1,176	\$74,506	A
Law, Public Safety, Corrections & Security			
Police & Sheriff's Patrol Officers	3,890	\$41,148	+
Fire Fighters	2,685	\$43,777	+
Emergency Medical Technicians & Paramedics	2,426	\$33,392	+
Manufacturing			
Purchasing Agents, Except Wholesale, Retail & Farm Products	1,829	\$52,686	+
Marketing			
Market Research Analysts	1,675	\$61,898	B
Science, Technology, Engineering & Mathematics			
Industrial Engineers	1,136	\$71,352	B

- + Long-term on-the-job-training
- ↗ Work experience in a related occupation
- + Postsecondary vocational award
- + Bachelor's or higher, plus work experience

- A Associate degree
- B Bachelor's degree
- M Master's degree
- D Doctoral degree
- P First professional degree

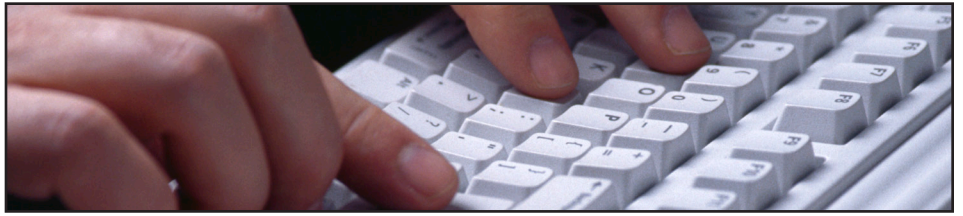
A Positive First Impression

Resume components:

- Contact information
- Objective statement
- Summary statement
- Employment history
- Education
- Relevant organizational participation, activities, awards, or certifications

Fine-tuning the resume:

- Your **contact information** should be at the top of your resume in a quick, easy-to-read format, including your name, address, phone numbers, email address, and website or online portfolio.
- When listing **employment**, include your job title, employer's name, city and state, and start and end dates of your employment. List a summary of responsibilities and accomplishments for each position.
- For **education**, start with your most recent or highest degree, including the name and location of the institution attended, the degree, and the field of study.
- **Objective and summary statements** are optional. These offer an opportunity for you to state in one or two sentences your goal for the employment application or a snapshot of your qualifications.



Content adapted from the ISEEK website, www.iseek.org, and "How Social Networking Sites Affect Your Job Search," Career Services of California University of Pennsylvania.

Additional resume tips:

- Try not to use acronyms. Spell out any acronyms you use so people and software can easily read them.
- Do not make statements you cannot prove.
- Keep it brief. Your resume is an overview of your qualifications, not your life story.
- Correct all typographical, grammatical, and spelling errors.
- Avoid salary expectations or wage history unless asked for that information.
- Give priority to skills on your resume. Scannable resume systems are designed to look for skills.

Make it easy to read for people and computers:

- Use section headings
- Use bullets to highlight details
- Space consistently
- Format your resume in a single-column format
- Use no more than two fonts in a size no smaller than 10 and no larger than 14.

Create a professional image:

- Check your outgoing voicemail message for loud background music, slang or improper language.
- Avoid using an unprofessional email address.
- Avoid using emoticons (smiley-face icons) or text language in emails and job applications.

Identify and use keywords:

- Identify keywords for the position and include them where appropriate in your resume, particularly on your objective, summary, individual job responsibilities, and skills.
- Keywords can be job titles, business functions, responsibilities, required strengths, degrees, and computer applications.
- You can seek keywords in job descriptions, company job boards, networking websites, professional or trade associations, and industry blogs and websites.
- Use the same keywords in your cover letter, application, and online profiles.

Career Planning Resources

Apprenticeships

www.missouriapprenticeship.com

Through an apprenticeship, a person will earn wages while they learn a skilled profession in a specific field like construction, health care, culinary arts, or others. An apprenticeship combines classroom studies with on-the-job training supervised by a mentor skilled in the profession.

Family Wage Calculator

<http://apps.oseda.missouri.edu/familywagecalc>

The Family Wage Calculator charts county-by-county the actual costs of making ends meet without any public or private supports. Since the calculator is tied to the poverty threshold, most Missourians will not want to live on as tight a budget as this calculator assumes, but gives teachers and parents an opening to talk about the importance of planning well for the future.

GED High School Equivalency

www.ged.mo.gov

Information about free classes, test sites, and opportunities for the GED high school equivalency test is available through the Missouri Department of Elementary and Secondary Education.

Higher Education

www.dhe.mo.gov

The Missouri Department of Higher Education offers a program and institution search tool on its website to help residents find educational programs that meet their needs. Also, the site includes information about enrollment, financial aid, services available in Missouri.



Jobs.mo.gov

Jobs.mo.gov

This website maintained by the Missouri Department of Economic Development provides valuable job search tools and convenient access to job listings throughout Missouri. Through MCS, visitors can connect with the nearest Missouri Career Center for personalized career-assistance services from trained workforce specialists, including access to skill-building training and human resources assistance for businesses.

Mapping Your Future

www.mappingyourfuture.org

Mapping Your Future provides career, college, financial aid, and financial literacy information and services for students, families, and schools. It is sponsored by student loan guaranty agencies from around the country.

Missouri Connections

www.missouriconnections.org

Missouri Connections is a web-based resource to help Missouri Citizens determine their career interests, explore occupations, establish education plans, develop job search strategies, and create resumés. Sponsored by the Department of Elementary and Secondary Education and the Department of Economic Development, Missouri Connections is available to students, parents, guidance counselors, educators, and job seekers at no charge.

Today's Military

www.todaysmilitary.com

The military offers training and educational opportunities across all career fields. Residents may explore the branches of service in the U.S. military and the opportunities available through them.



brought to you by:



Missouri Center for Career Education

University of Central Missouri

T.R. Gaines 302

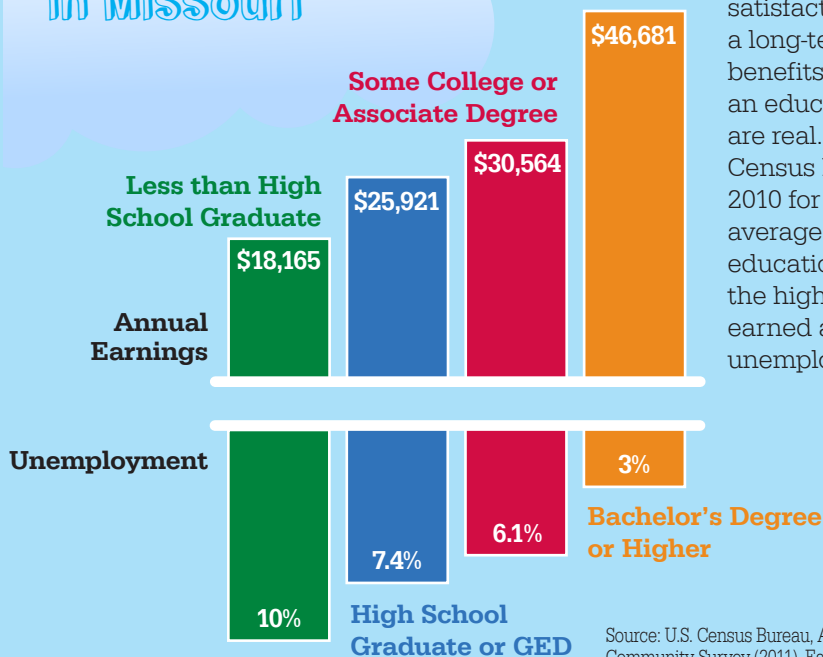
Warrensburg, MO 64093

(660)543-8768 ph

(660)543-8995 fax

www.mcce.org

Education Pays in Missouri



The Value of Education

Outside of the personal satisfaction of finishing a long-term goal, the benefits of completing an educational program are real. Based on U.S. Census Bureau data from 2010 for Missouri, on average, the higher the educational attainment, the higher the wages earned and the lower the unemployment rate.

Source: U.S. Census Bureau, American Community Survey (2011). Earnings represented in 2011 inflation-adjusted dollars.

©2013 University of Central Missouri

Additional copies of this guide are available.

Use the order form on the MCCE website at www.mcce.org.



Visit MCCE website.



This document was developed as a print complement to the Missouri Connections website. Many career exploration tools are available at www.missouriconnections.org.



MissouriConnections.org
Connect to Your Future